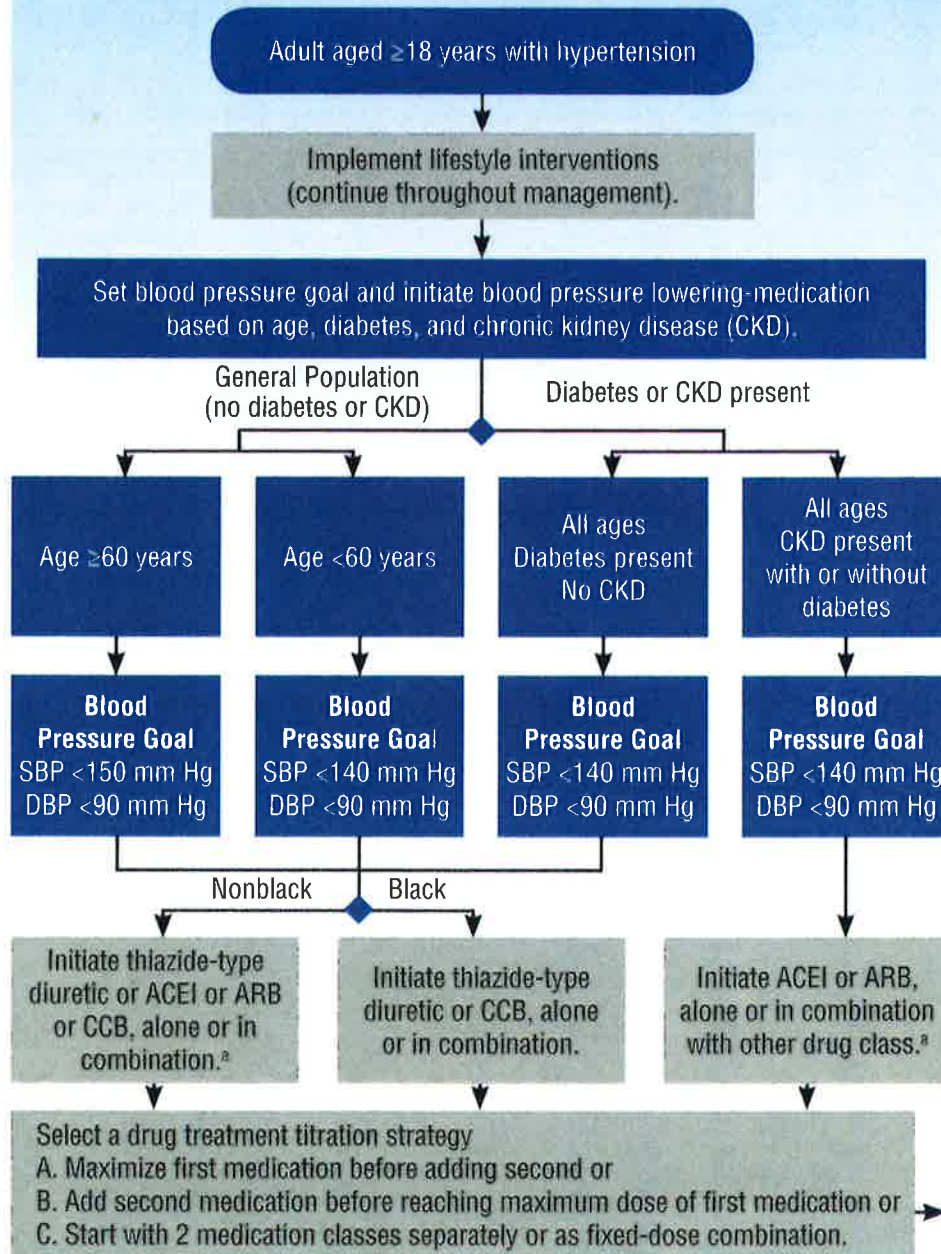


2015 Hypertension Guideline Management Algorithm



The Voice of Accountable Physician Groups



SBP indicates systolic blood pressure; DBP, diastolic blood pressure; ACEI, angiotensin-converting enzyme; ARB, angiotensin receptor blocker; and CCB, calcium channel blocker.

^aACEIs and ARBs should not be used in combination.

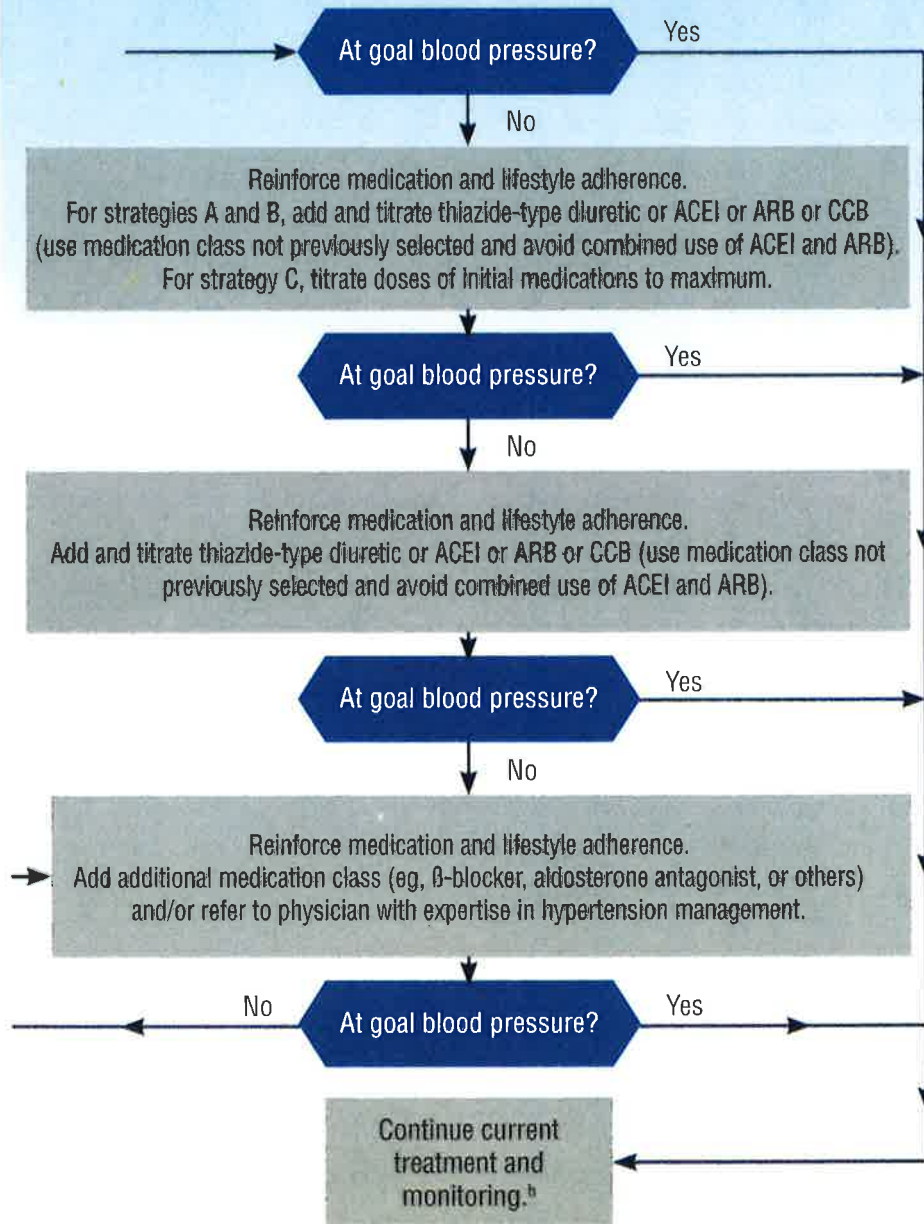
^bIf blood pressure fails to be maintained at goal, reenter the algorithm where appropriate based on the current individual therapeutic plan.

James PA, Oparil S, Carter BL, et al. 2014 Evidence-Based Guideline for the Management of High Blood Pressure in Adults: Report From the Panel Members Appointed to the Eighth Joint National Committee (JNC 8). *JAMA*. 2014;311(5):507-520. doi:10.1001/jama.2013.284427. Copyright 2014 American Medical Association. All rights reserved.

2015 Hypertension Guideline Management Algorithm



The Voice of Accountable Physician Groups



SBP indicates systolic blood pressure; DBP, diastolic blood pressure; ACEI, angiotensin-converting enzyme; ARB, angiotensin receptor blocker; and CCB, calcium channel blocker.

^a ACEIs and ARBs should not be used in combination.

^b If blood pressure fails to be maintained at goal, reenter the algorithm where appropriate based on the current individual therapeutic plan.

James PA, Oparil S, Carter BL, et al. 2014 Evidence-Based Guideline for the Management of High Blood Pressure in Adults: Report From the Panel Members Appointed to the Eighth Joint National Committee (JNC 8). *JAMA*. 2014;311(5):507-520. doi:10.1001/jama.2013.284427. Copyright 2014 American Medical Association. All rights reserved.